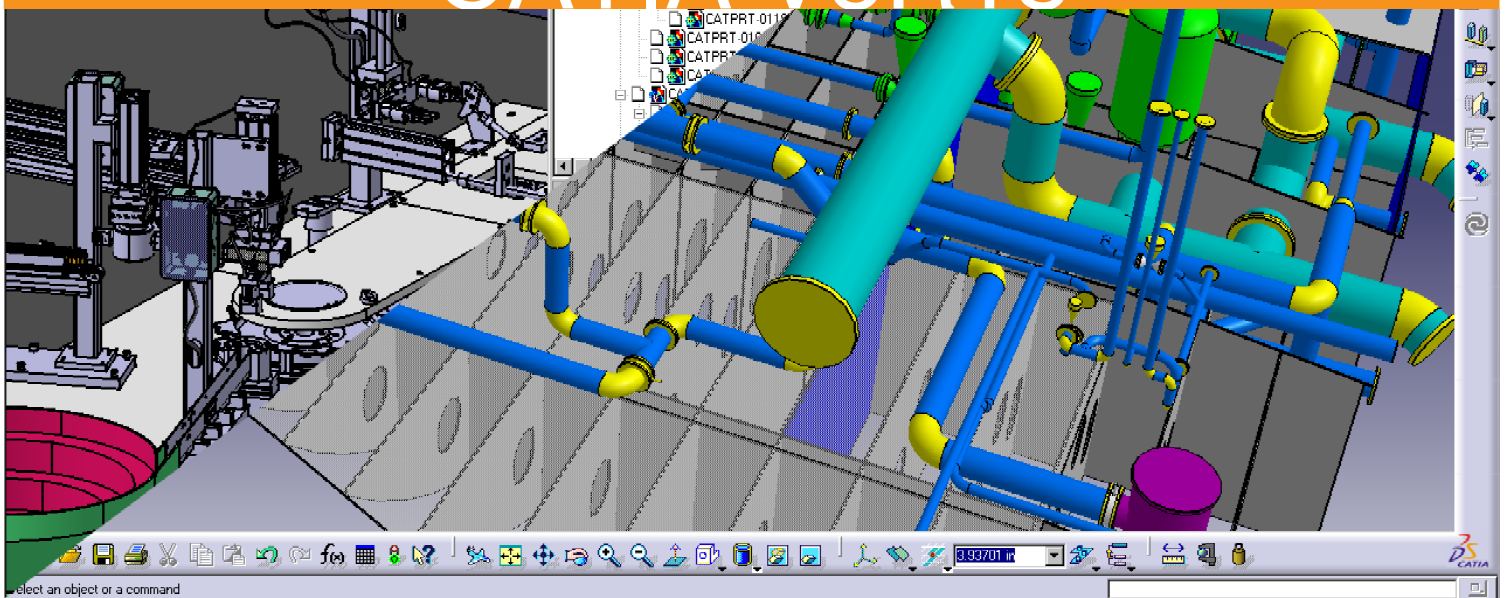


Infrastructure

CATIA - COM 1 TO 2 EXTENSION (C12)

CATIA V5R18





Infrastructure

CATIA - COM 1 TO 2 EXTENSION

Give access to P2 products on a P1 configuration for wider business process coverage.

Product overview

CATIA - COM 1 to 2 Extension (C12) gives access to the portfolio of CATIA P2 applications for CATIA P1 customers or for CATIA P1 users in a mixed P1/P2 environment.

This product, when installed on top of any P1 configuration, acts as an upgrade of CATIA infrastructure from P1 platform to P2 platform and allows users to install P2 sharable or add-ons products in addition to it. The evolution from P1 platform to P2 platform can be made at any time after initial installation, on all workstations or on a limited set of workstations dedicated to specific tasks.

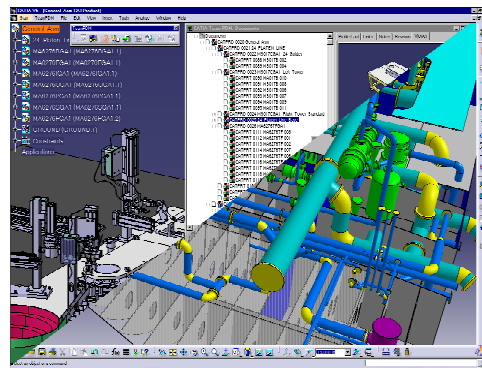
Product Highlights

- >Upgrade of CATIA infrastructure from P1 platform to P2 platform
- >Full P2 user interface provided to P1 configuration users
- >Scalability of P1 configurations by access to P2 product portfolio
- >Large variety of operating systems and hardware platforms

Product Key Customers Benefits

Access to the largest application

With CATIA - COM 1 to 2 Extension (C12) , companies having selected the P1 platform of CATIA Version 5, are given the possibility to use P2 applications for embracing a larger



scope of processes, as long as their business needs grow. This product, when installed on top of any P1 configuration, acts as an upgrade of CATIA infrastructure from P1 platform to P2 platform and allows users to install P2 sharable or add-on products in addition to it.

Flexibility... The evolution from P1 platform to P2 platform can be made at any time after initial installation, on all workstations or on a limited set of workstations dedicated to specific tasks.

Asset protection... The evolution from P1 platform to P2 platform is an extension but not a replacement of software. Therefore, the investment made on hardware acquisition, software licenses, training, methodology development, etc. is totally preserved. As well as all the data generated, since CATIA P1 and P2 applications share a common data model.

Large variety of operating systems and H/W platforms... CATIA - COM 1 to 2 Extension (C12) is available on Windows

2000, Windows XP, IBM AIX, Hewlett Packard HP-UX, SGI IRIX and Sun Solaris.

ABOUT CATIA V5R18

CATIA is Dassault Systemes' PLM solution for digital product definition and simulation.

plm.3ds.com/CATIA

