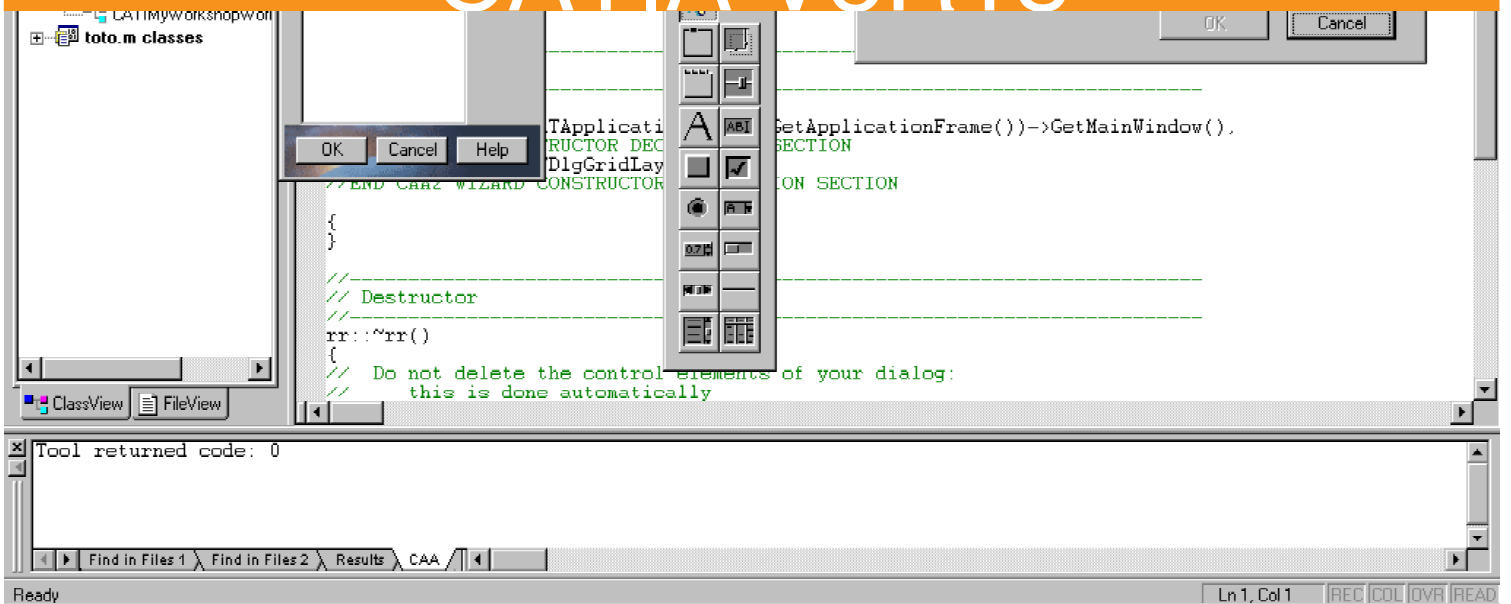


CAA-RADE

# CAA - C++ Interactive Dashboard (CID)

# CATIA V5R18





## CAA-RADE

# CAA - C++ Interactive Dashboard

Provide developers with a single rapid application development environment (RADE) for building UNIX & Windows platforms C++ CAA V5 applications on CATIA and ENOVIA Version 5.

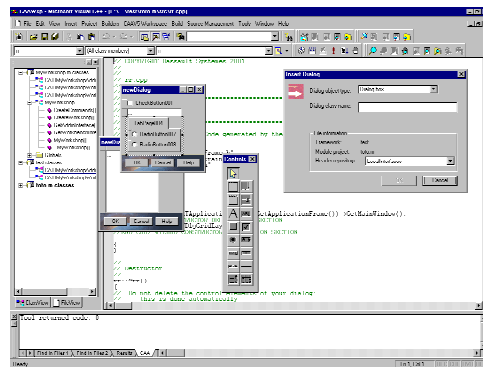
### Product overview

CAA - C++ Interactive Dashboard (CID) is a Rapid Application Development Environment (RADE) on Windows platform for building C++ applications. It provides a single point access to the C++ development tools that support the full development cycle, from design and development through test, deployment and maintenance. Its tight integration with Microsoft Visual Studio C++ (R) makes it easy to learn and master. It provides a single point of access to all products delivered with CAA RADE V5. While operating on Windows platform, CAA - C++ Interactive Dashboard Product allows automatic code building for UNIX platforms.

Providing the same robust development methodology used by Dassault Systemes, the software development community can now take advantage of years of expertise in design, development, test and release which goes into every CATIA and ENOVIA product.

CAA - C++ Interactive Dashboard (CID) allows the customization of C++ components provided through CATIA and ENOVIA APIs deliveries. This makes possible the customization of CATIA V5 and ENOVIA V5 application server.

Note: Microsoft Visual Studio C++ is a product of Microsoft Corporation, and must be purchased separately.



### Product Highlights

- ❑ Full application development processes coverage
- ❑ Interactive access to:
  - ❑ CAA - Multi-Workspace Application Builder (MAB)
  - ❑ CAA - C++ Unit Test Manager (CUT)
  - ❑ CAA - C++ Source Checker (CSC)
  - ❑ CAA - Source Code Manager (SCM)
- ❑ Full integration with Microsoft Visual Studio C++ (R)
- ❑ NT file replication on UNIX and UNIX code building
- ❑ Seamless Visual C++ project integration with V5 workspaces
- ❑ Components workspace creation wizard
- ❑ V5 component creation wizard
- ❑ Source navigator
- ❑ API documentation accesses
- ❑ Command Creation Wizard
- ❑ CATIA Dialog Builder
- ❑ Workbench and command creation wizard
- ❑ ENOVIA event listener code generation
- ❑ Interactive user exits for ENOVIA LCA
- ❑ Microsoft Visual.NET C++ Version 8 support

Integrates Source Code Manager operations within Code Generator wizard

## Product Key Customers Benefits

### Full application development process coverage

Developers are provided with a Rapid Application Development Environment (RADE) on Windows XP for building C++ applications. This dashboard offers a single point access to the C++ development tools that support the full development cycle, from design and development through test, deployment and maintenance.

### Interactive access to CAA - Multi-Workspace Application Builder Product

Developers can interactively access the Multi-workspace Application Builder from within C++ Interactive Dashboard

### Interactive access to CAA - C++ Unit Test Manager Product

Developers can interactively access the C++ Unit Test Manager from within C++ Interactive Dashboard.

### Interactive access the CAA - Source Code Manager (SCM)

Developers can interactively from within C++ Interactive Dashboard. User interface and menu bar items are integrated. IT organization and developers can interactively operates on workspace, frameworks, modules, sources, directory or files to perform task such as synchronizing, promoting, checking-out, attach, detach and more.

### Interactive access to CAA - C++ Source Checker (CSC)

Developers can access the CAA - C++ Source Checker (CSC) from within C++ Interactive Dashboard. User interface and menu item is integrated to CAA - C++ Interactive Dashboard (CID). In a few button clicks, Q&A people and developers are able to interactively check C++ source from a complete workspace to a list of frameworks to

a module component to a list of C++ source.

### Full integration with Microsoft Visual Studio C++ (R)

Fully integrated to with Microsoft Visual studio C++, the entire set of specific Component Application Architecture (CAA) configuration and build capabilities are added or substituted to the standard equivalent functions found in Microsoft Visual studio C++.

Options for these capabilities are offered through specific menus added in Microsoft Visual studio C++.

### Windows platform file replication on UNIX and UNIX code building

Developers can set option in order to automatically generate the source file tree on UNIX platform from Windows platform. Text file format differences are automatically handled. Build operations can be also performed on both platform from C++ Interactive Dashboard

### Seamless Visual C++ project integration with V5 workspaces

Developers are provided with components behaviour identical to those existing in MS Visual studio C++.

### Components workspace creation wizard

Provides automatic generation of the file tree and declaratives set for the framework and modules component. Capability is also offered to generate different type of frameworks and modules according to the options set in their respective wizards such as education framework, shared library or module.

### V5 component creation wizard

Developers can automatically perform code generation for interfaces and interface implementation. They can also generate all the object modeller macros for both interfaces and interfaces implementation wizard. Interfaces implementation skeleton are generated from the interface list being imported by the project by the mean of a dynamic code analysis.

### Source navigator

Source navigator capabilities enrich the

standard features of Microsoft Visual studio C++ by providing back and forth access to code components without having the whole class and derivate objects in the current project.

#### **API documentation accesses**

Developers can directly access to the documentation with a simple mouse click on any text string in the source code. Tools documentation access is also provided by means of the F1 function key for all of the capabilities added in Microsoft Visual studio C++.

#### **Commands Creation Wizard**

Command Creation Wizard provides automatic generation of command class skeletons.

Interactive panel builder...Interactive panel builder allows automatic code generation to create panels for both UNIX and Windows NT operating systems

#### **Workbench and command creation wizard**

The workbench builder application capability provides a simple way to integrate customer applications into CATIA Version 5 user interfaces using menu and toolbar commands.

#### **ENOVIA event listener & Interactive user exit code generation**

Developers can customize through a wizard their own user exit. This customization code will then be executed at each event generated by ENOVIA V5 server application.

## ABOUT CATIA V5R18

CATIA is Dassault Systemes' PLM solution for digital product definition and simulation.

**[plm.3ds.com/CATIA](http://plm.3ds.com/CATIA)**

