

Automotive Accelerator™ For Program Management (APQP)

The automotive industry is faced with challenges that arise from the globalization trend, pressures for acceleration of product innovation, higher material costs and the shift of responsibility down to the supply chain tiers. These industry dynamics result in forced asset reallocation, increased competition and stricter governmental, regional and industry regulations – all of which add to the complexity of managing global automotive vehicle programs to budget and on schedule.

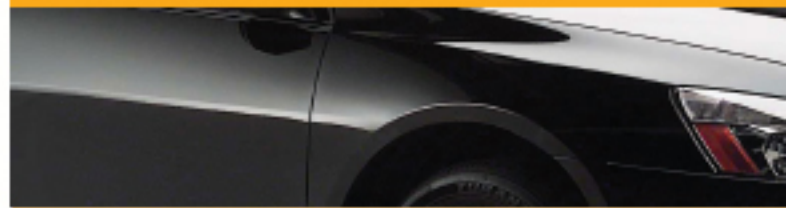
To successfully launch on-time and on-budget programs while meeting quality goals, automotive Original Equipment Manufacturers (OEMs) and suppliers need to effectively manage their product development and program launch processes, including:

- Developing global vehicle product programs with the Advanced Product Quality Planning (APQP) process
- Tracking and managing all deliverables, such as FMEAs, DVP&R and Control Plans
- Communicating changes to all key stakeholders in a timely manner
- Mitigating risk early with management dashboards and visibility into each program's related projects or supplier deliverables—such as with the Production Part Approval Process (PPAP)

The ENOVIA MatrixOne Solution

ENOVIA MatrixOne's Automotive Accelerator™ for Program Management (APQP) is a configurable and Product Lifecycle Management (PLM) solution for OEMs and suppliers within the automotive industry. This solution, developed with industry best practice processes and tools, enables companies to manage and improve the project execution of complex automotive vehicle programs through the supply chain tiers. This offering includes standard templates for the phase-gate APQP process and the PPAP process, incorporating the latest ISO/TS 16949 deliverables as well as pre-defined work processes, reports, role-based user interfaces and document management capabilities.

Industry Accelerator

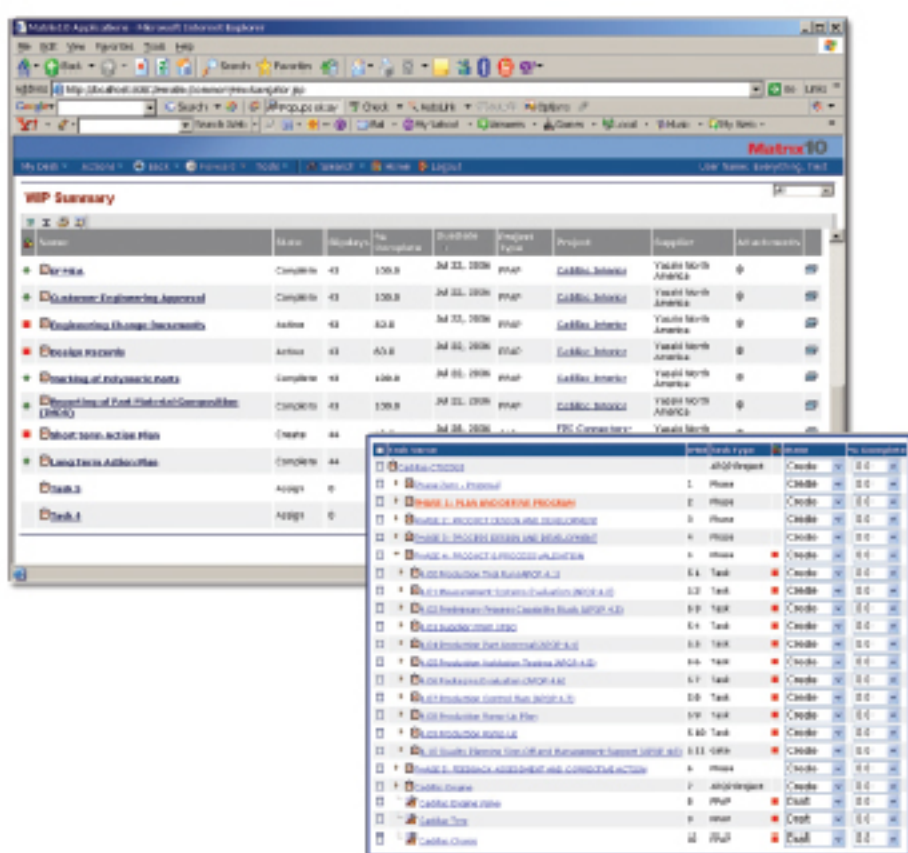


The MatrixOne Automotive Accelerator for Program Management (APQP) allows companies to effectively manage and launch vehicle development programs that meet quality goals and come in on-time and on-budget by giving role-based visibility and access to real-time APQP project and product status information.

- Program Managers can manage and track complex vehicle programs, including those consisting of multiple interrelated APQP projects that may also involve external supplier sub-projects and PPAP deliverables.
- Cross-functional program teams can improve communications on deliverables with timely notifications of any changes.
- Management can review APQP program status dashboards, critical tasks and interdependencies across projects in order to mitigate risks with corrective action plans and issues management.
- Quality Managers can independently manage and track supplier deliverables online using the standard PPAP process and template (TS16949 standard).
- System and Design Engineers can search and use historical data for deliverables such as FMEAs and DVP&Rs to improve knowledge reuse.

Benefits of the MatrixOne Auto Accelerator for Program Management (APQP):

- **Lower design change costs** by increasing knowledge reuse of previously completed deliverables such as FMEAs, DVP&Rs and Control Plans
- **Enhance product quality** by improving communication between cross-functional teams and suppliers with tracking of deliverables for PPAP submissions and Corrective Actions
- **On-time and on-budget launch** of new vehicle programs from concept to production with simplified management decision-making enabled by APQP program dashboard visibility, control and risk mitigation



To learn more about how your company can benefit from ENOVIA MatrixOne PLM solutions, call us today at 978 589 4000, or visit MatrixOne.com

MatrixOne Automotive Accelerator for Program Management (APQP) Supported Capabilities:

- Automotive standard APQP phase gate process template with pre-configured settings
- PPAP and Corrective Action templates that comply with AIAG and TS16949 standards
- APQP and related sub-projects management, such as PPAP and Corrective Actions
- APQP part and supplier status matrix
- Task dependencies to review critical paths between
 - APQP sub-project tasks or
 - Sub-project tasks and PPAP/CAR projects
- Two-way, real-time integration to Microsoft® Project for milestone or task editing in Microsoft Project, while project, task execution and visibility are enabled by Matrix¹
- Multiple file check-in for multiple task deliverables
- Project snapshots for improved baseline and historical audit tracking
- Corrective Action request and Eight Discipline (a problem solving methodology made up of a detection cycle and a prevention cycle. It defines a corrective action methodology) tracking within the context of the APQP project
- Project deliverable and folder content summary reports
- "Package and Transfer" deliverables and folder content files to desktop
- Real-time dashboard metrics on performance of projects and APQP programs
- Synchronization of activities with related product information including:
 - Parts and Bill of Materials for improved program execution²
 - Requests for quotes and quotations for meeting target costs and source plan timing³
- Optional Microsoft Desktop integration and usability tools for managing documents¹

- 1 Requires MatrixOne Microsoft Desktop Integration™
2 Requires MatrixOne Engineering Central™
3 Requires MatrixOne Sourcing Central™

The ENOVIA MatrixOne PLM Environment

Being the industry's most robust and flexible PLM environment, ENOVIA MatrixOne provides organizations with a single, secure environment that eliminates the barriers caused by geographically dispersed organizations and value chains, multiple disparate systems and increasing security requirements.



EDS Technologies with 12 years of experience in implementing PLM in automotive industry leads you along the road to PLM success delivering process and product innovation and long-term strategic value. More than 650 companies use our solutions to drive business value and gain a competitive advantage. EDST is a strategic business partner of MatrixOne in India delivering value added services to Indian automakers and suppliers. For more information call 99455 05415 or mail to marketing@edstechnologies.com

HEAD OFFICE:

#153, Second Cross, Promenade Road Frazer Town, Bangalore - 560 005, India Ph :+91 (80) 25514338 - 6 Lines
Fax :+91 (80) 25514328 / 25309104